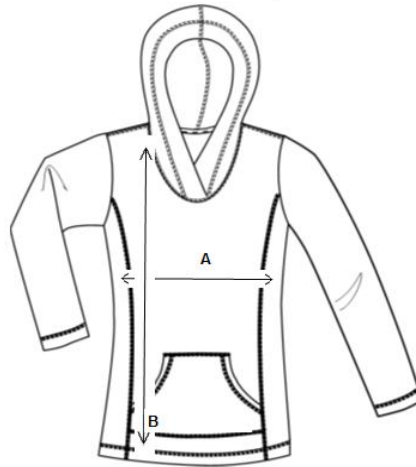


SIZE SPECIFICATIONS



anvil[®]

Style no. 72500L

Style name Women's Hooded French Terry

Size	Chest / inches (A)	Chest / cm (A)	Length / inches (B)	Length / cm (B)
S	18,5	46,99	26,5	67,31
M	20,5	52,07	27	68,58
L	22,5	57,15	28	71,12
XL	24,5	62,23	29	73,66
2XL	26,5	67,31	29,5	74,93
Tol.	+/- 0.75	+/- 1.91	+/- 1	+/- 2.54